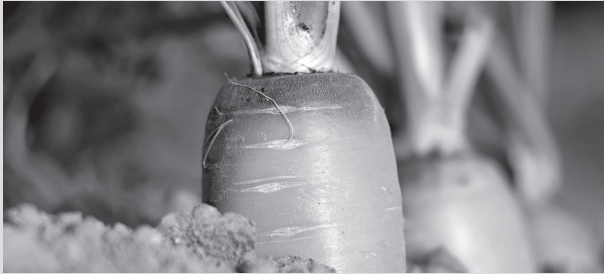


Name: \_\_\_\_\_

## Plants Have Roots and Stems

Plants have **roots**. Roots grow down. They go into the ground. They hold the plant so it does not fall over. Roots bring water up to the plant.

We can eat some plant roots.



**Carrot**

Plants have **stems**. The stem holds the plant up. It carries water to the leaves. The stem of a tree is called the **trunk**.

We can eat some plant stems.




**Giant sequoia**



**Celery**



**Asparagus**

1. Roots grow \_\_\_\_\_.
2. Roots go into the \_\_\_\_\_.
3. Stems carry \_\_\_\_\_ to the leaves of a plant.
4. Draw roots and a stem. 



Name: \_\_\_\_\_

# Plants Have Leaves

Most plants have green **leaves**. The leaves take in sunlight. The leaves take in air. Leaves make food for the plant. Leaves can be big or small. They can be different shapes.

We can eat some plant leaves.




Lettuce



Spinach

1. Leaves take in \_\_\_\_\_  
and \_\_\_\_\_.

2. Leaves make \_\_\_\_\_ for the plant.

3. Draw some leaves. 



Name: \_\_\_\_\_

# Plants Have Flowers

Plants have **flowers**.

Flowers have **petals**.

Flowers make **fruits** and **seeds**.

Seeds make more plants.



Sunflower and seeds


We can eat some flowers.



Broccoli



Cauliflower

1. Flowers have colorful \_\_\_\_\_.
2. What color is your favorite flower? \_\_\_\_\_
3. Flowers make \_\_\_\_\_ to make more plants.
4. Draw a flower. 



Name: \_\_\_\_\_

# Plants Have Fruits and Seeds

Some plants have **fruits**. Fruits come from flowers. Fruits have **seeds** inside. New plants grow from seeds.



**Apple blossoms**



**Apples**



**Apple seeds**

We can eat many fruits.



**Watermelons**



**Peaches**

We can eat some seeds.



**Corn kernels**



**Sunflower seeds**

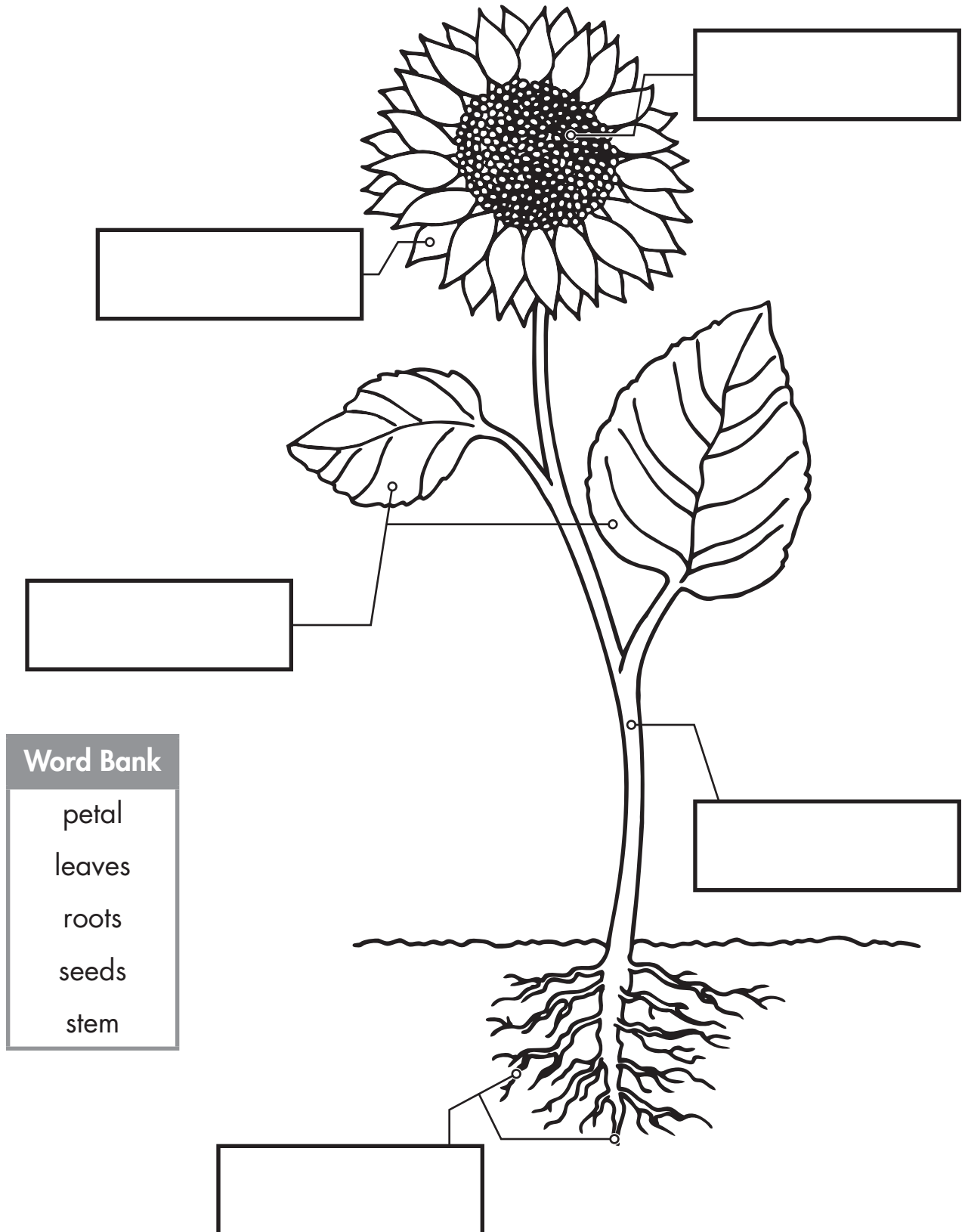
1. Fruits come from \_\_\_\_\_.
2. Fruits have \_\_\_\_\_ inside.
3. Seeds make new \_\_\_\_\_.
4. Draw your favorite fruit. →



Name: \_\_\_\_\_

# Parts of a Plant

Directions: Label the parts of a plant.



**Word Bank**

- petal
- leaves
- roots
- seeds
- stem

# Answer Key

## Unit 1—What Scientists Do

### What Do Scientists Do? (page 6)

- c
- b
- Check for appropriate answers.

### Observe with Tools (page 7)

- a
- b
- Circled: telescope, hand lens, and microscope
- Check for appropriate answers.

### Measuring Tools (page 8)

- 4
- 5
- frog
- 5
- Check that container is colored to 3 liters.

### Scientists Compare Things (page 9)

- bigger
- faster
- Check drawings and labels for appropriate answers.

### Cause and Effect (page 10)

- 1–3. Check for appropriate answers.

## Unit 2—Living and Nonliving

### What Are Living Things? (page 11)

- Circled: kangaroo, flower, and child
- Crossed out: spoon, glass of water, chair, and backpack

### What Living Things Do (page 12)

- grow
- reproduce
- learn, change

### Living or Nonliving? (page 13)

- no
- no
- no
- no
- yes
- yes
- yes
- yes
- earthworm
- gummy worm

### Living and Nonliving Things Are Different (page 14)

Check for appropriate drawings.

### Living and Nonliving Parts of a Habitat (page 15)



The different shading indicates possible answers.

#### Living things:



trees and plants, animals, and boy

#### Nonliving things:



clothes, ball, house rocks, and water

## Unit 3—Animals and Plants

### What Living Things Need (page 16)

|         | Air | Food | Sunlight | Water |
|---------|-----|------|----------|-------|
| Plants  | ✓   |      | ✓        | ✓     |
| Animals | ✓   | ✓    |          | ✓     |

Plants make the food they need from sunlight.

Animals benefit from sunlight, the source of all energy. Some animals need sunlight to warm their bodies. All animals need food and sunlight helps plants grow.

### Plant Needs (page 17)

- | Plants              |              |
|---------------------|--------------|
| Need                | Do Not Need  |
| air<br>Sun<br>water | nest<br>rock |

- Plants make their own food. They need sunlight, air, and water to make food.

### Animal Needs (page 18)

Check for appropriate drawings.

### Compare a Plant and an Animal (page 19)

**Animal:** food, shelter

**Both:** air, water

**Plant:** Sun

### What Am I? (page 20)

- both
- animal
- animal
- plant
- both

## Unit 4—Parts of Plants

### Plants Have Roots and Stems (page 21)

- down
- ground
- water
- Check for appropriate drawings.

### Plants Have Leaves (page 22)

- sunlight, air
- food
- Check for appropriate drawings.

### Plants Have Flowers (page 23)

- petals
- Check for appropriate answers.
- seeds
- Check for appropriate drawings.

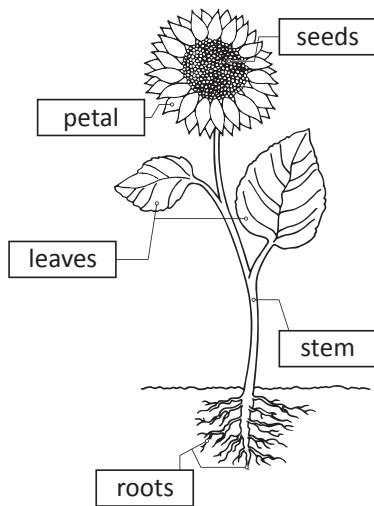
### Plants Have Fruits and Seeds (page 24)

- flowers
- seeds
- plants
- Check for appropriate drawings.

# Answer Key (cont.)

## Parts of a Plant (page 25)

Check labels.



## Unit 5—Animals and Plants Are the Same and Different

### Animals and Plants Are the Same and Different (page 26)

1–2. Check for appropriate answers.

### We Are the Same and Different (page 27)

1–4. Check for appropriate answers.

### Animals of the Same Kind (page 28)

Possible answers:

**Brown Bear:** brown fur, eats meat, sleeps in winter

**Giant Panda:** black and white fur, eats only plants, stays awake in winter

**Same:** big, thick fur, round ears, short tails, big paws, long claws

### Animals in the Same Family (page 29)

Possible answers:

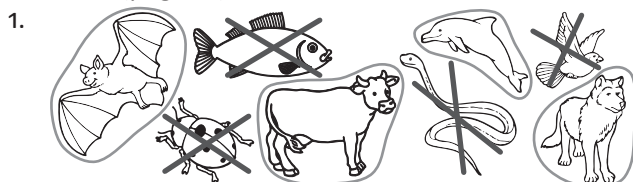
- The kittens have the same body shape and body parts. They are the same size. They have fur.
- The kittens are different colors.

### Grouping Plants (page 30)

- cactus, rose
- rose, strawberry (also cacti)
- strawberry, grapes
- lettuce, carrot

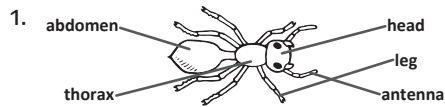
## Unit 6—Animal Classes

### Mammals (page 31)



- Yes. I know because I have hair and lungs and I am warm-blooded.

## Insects (page 32)

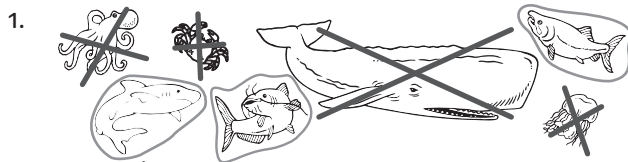


2. 6



4. Students should count the legs.

## Fish (page 33)



2. mammals

3. They have fins, tails, and scales.

## Reptiles (page 34)

- scales
- Sun
- lungs
- land, water
- Check for appropriate answers.

## Birds (page 35)

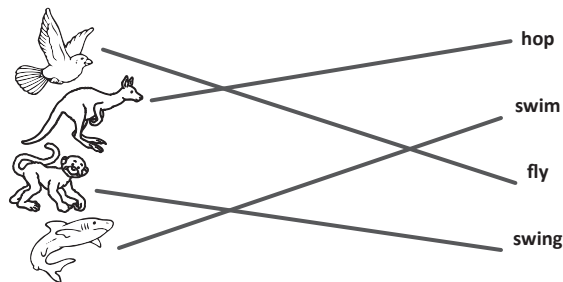
- feathers
- birds
- warm
- eggs
- No
- No

## Unit 7—Animal Body Parts

### Animal Senses (page 36)

- sight
- hearing
- smell
- taste
- touch

### Animal Movement (page 37)



### Animals Eat and Drink (page 38)

- It cracks open fruits and seeds with its beak.
- It holds food with its claws and eats with its sharp teeth.
- It pulls leaves off branches with its long tongue.

### Animals Keep Warm or Cool (page 39)

- feathers
- fur
- wool
- sweat
- blubber

### Animals Protect Themselves (page 40)

Check for appropriate answers.